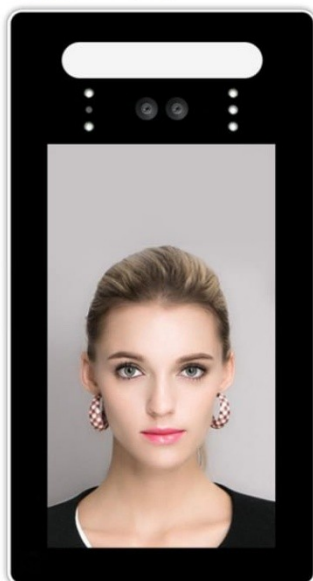




FaceChk

Face is Future

FaceCHK Panel



Touchless Attendance Solutions

**Best for School, Colleges, Institutes
Small, Big Companies & Factories**

**100% Accuracy
No Physical Contacts
Based of Artificial Intelligence
Multiple Face Detection at a time
Cloud Based & Standalone Solution**

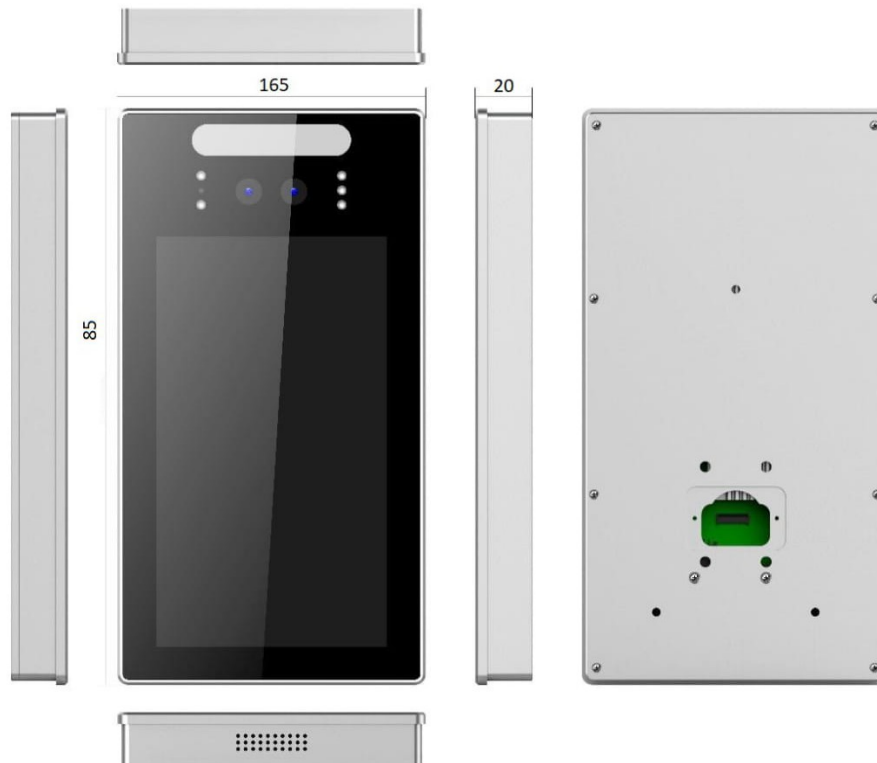
**Product Demo
Call: 7303416041**

Technical Parameters:

Hardware Specs	
Processor	Arm CPU
RAM	RAM 1GB
Storage	ROM 8GB
Operating System	Linux
Display	5-inch LCD screen, resolution: 1024 * 600 @ 60HZ
Casing & Cover	Aluminum alloy shell; organic glazed panel
Performance	
Recognition Height	1.2-2.2 meters
Recognition Distance	0.5-4 meters
Face angle	35 degrees left and right, 35 degrees up and down
Recognition time	Within 100 milliseconds
Status display	Recognized name will be shown on the screen
Face Database Size	50,000 (expandable)
Main Board Interface	
Power interface	1, external socket and a built-in 6P socket (with STB function) DC 12V input
Network Interface	1 RJ45 10M / 100M adaptive Ethernet port
Extension ports	1 UART, 1 RS485
Headphone / MIC interface	1, external headphone audio output socket (GB: GND, MIC, R, L)
WIFI	1 WIFI signal, support 2.4G Wi-Fi, support Wi-Fi 802.11b/g/n protocol
SD card interface	Up to 64GBTF card
USB2.0 interface	2, USB HOST (1 external of which is OTG; 1 built-in)
Relay output	1 Output (normally open, normally closed)
Wiegand interface	1 Wiegand output
3G/4G/GPS (optional)	Scalable 1 channel 3G (WCDMA, EVDO, CDMA, GSM) / 4G (LTE-TDD / LTE-FDD / TD-SCDMA / EDGE / GPRS / GSM) signals

Digital input (optional)	1 fire signal, 1 exit button input
Light strip output (optional)	1 12V tri-color light signal output
Illumination light signal (optional)	1 light signal output, 1 light sensor signal input
Touch screen interface (optional)	1 ETP input reserved
Camera Specs	
Camera	HDR, auto/manual exposure
Sensor	1 / 2.7" industrial Dual HD wide motion image sensor
Frame rate	Up to 30 frames, no smear
LED spectrum	White
Effective Pixels	1920 * 1080
Lens	M12 (f = 7MM)
Cell size	3.0um X3.0um
Minimum illumination	≥0.01LUX at F1.2
Signal to noise ratio	≥41dB
Wide dynamic range	≥96dB
Interface Type	MIPI
General Specs	
Operating temperature	-10°C - + 60 °C
Working humidity	10 ~ 90% relative humidity, non-condensing
Power Supply	DC12V / 2A
Power consumption	≅ 25W
Size	165 * 85 * 20mm (length * width * height)
Weight	0.3 kg (varies according to hardware configuration)
Installation method	Supports wall and column installation

Dimension drawing (mm):



FOR MORE INFORMATION CALL: 7303416041
www.shailersolutions.com/facechk